

# FireWorks-USA NJ Fire Museum News

*Organizational Notice – The NJ Fire Engine & Equipment Museum at Allaire Inc, is a 501C (3) non-profit corporation originally chartered by the state of New Jersey to establish and operate a fire museum and fire safety education center at Allaire State Park . The organization is comprised of the NJ Fire Museum and the New Jersey Fallen Firefighter's Memorial . A parent non-profit foundation will be developed to provide long term stability for the museum, education center and Fallen Firefighter's Memorial to accomplish our mission as stated in the caption above. NJ Fire Museum News is our newsletter to museum patrons. Comments and newsworthy articles are invited. Please contact the editor by mail, email or fax at the address listed in the "How to Contact Us" box below.*

Issue 7 Volume 1

Visit the website at: [HTTP://FIREWORKS-USA.ORG](http://FIREWORKS-USA.ORG)

Winter/Spring 2007

## Honorary Board of Directors

The Honorable Thomas H. Kean,  
President, Drew University

Mr. Ronald J. Del Mauro, President,  
St Barnabas Health Care System

Monsignor Robert Sheeran,  
Seton Hall University

Mr. Christopher H. Assenheimer,  
NJ State Fire Chief's Assn

Mr. Scott Campbell,  
Campbell Supply Co. Inc.

Mr. J. Fletcher Creamer,  
J. Fletcher Creamer & Son.

Mr. George R. Laufenberg,  
NJ Carpenters Fund

William C. Margareta,  
NJ State Safety Council

Mr. Leigh Peterson,  
NJ State Firemen's Association.

Congressman Frank Pallone Jr.,  
Long Branch

Mr. Larry Petrillo,  
Director, Division of Fire Safety

Ms. Rae Wallace,  
Fire Service Women of NJ

*(several pending 2007 acceptance)*

The Honorary Board also includes a  
bi-partisan group of legislators from  
the NJ Assembly and Senate.

## **HOW TO CONTACT US!**

NJ Fire Museum  
175 Washington Ave,  
Long Branch NJ 07740

Tel (732) 222-5783  
Fax (732) 229-7708

<http://fireworks-usa.org>

## **New Jersey Fire Museum & Fallen Firefighter's Memorial Moving Forward in 2007**



***The 2007 Muster Season started on May 5th at Washington Crossing (above) where Don Christie's vintage 1942 Ford kept the kids in water all day long! See the website for dates of muster events through October.***

***Photo— museum staff***

Hello Friends and Patrons!

The Board of Directors recently met to review priorities and establish fund-raising goals for 2007. We appreciate the support of the many individuals, fire companies and departments that responded to our renewal requests. Fund-raising remains our top-priority.

The Memorial committee is promoting a series of family-oriented sports events to benefit the NJ Fallen Firefighter's Memorial. Please read about the upcoming events and support the effort!

The support of the "grass roots" firefighters and their family and friends remains the strongest base for our worthy project. Even so, your Board of Directors continue to seek support from state and corporate sources.  
*Continued Page Two*

***The NJ Fire Museum is a 501 c 3 non-profit, 100% volunteer staff.***

## Board of Directors

Dale Bennett  
 C. Bernard Blum  
 Albert E. Burdge Jr.  
 Helen Burns (Secretary)  
 Robert Burns (Vice President)  
 Roger Demareski  
 David W. Horsnall  
 David C. Horsnall  
 Vahak Hovnanian  
 Irven G. Miller Jr. (Chairman)  
 Don Mulligan (President)  
 David Napier  
 Fred Richart (Treasurer)  
 Timothy J. Smith  
 Stanley J. Sickels  
 Whitey Swartz (South Jersey)

### Webmaster

Don Colarusso

## *Museum's Double-decker now on Public Display!*

*Our 1850 rig is on loan to Trenton Fire Museum*



***Don Mulligan (Fire Museum President) and Dennis Keenan (Trenton Fire Department Director) with the 1850 Young & Son hand drawn engine recently put on display at Trenton Fire Museum. The rig is on loan from the Office of Historic Properties until the fire museum is built. The Trenton Fire Museum is located at 244 Perry Street and is accessible during normal business hours. If you have a group, please call ahead to (609) 989-4038. Photo— June Day***

One of the issues we addressed at our recent meeting was our organizational name. Over the years, the fire museum has had several “working titles” which did not always make it clear that we are also the host for the NJ Fallen Firefighter’s Memorial. So we have established a name for our correspondence and promotions from this point forward:

### **The New Jersey Fire Museum & Fallen Firefighter’s Memorial**

This title captures both of our major components, the original historical museum element and the NJ Fallen Firefighter’s Memorial.

As a practical matter, we retain the legal title of our 501C 3 non-profit which is registered with the state as the “New Jersey Fire Engine & Equipment Museum at Allaire Inc”. However, our public title will be the words shown in bold print above.

Members of the museum Volunteer Committee recently participated in the annual State History Fair

at Washington Crossing State Park. It was a great venue to present some fire service history and it was definitely fun for the many children who participated in the bucket brigade and house-a-fire events.

The 2007 season of Fire Musters is upon us! See the full list of events at the Website. The Volunteer Committee continues work on a variety of projects including building a replica hand-engine. We’d sure like to have you join the crew.

Whatever your interest: Fund-raising, wood-working, vehicle maintenance, public promotion, computer or graphic arts—we have a job to suit your available time and interests! Please join the museum team by contacting Helen at (732) 463-7445 or myself at (732) 539-0168.

We look forward to hearing from you.

*Don Mulligan*

President and Newsletter Editor

## NJ Fallen Firefighter's Memorial Begins Sports-oriented Fund-raising Events

**Cathy Wasner Coursen**, chair of the Fire Museum's Fallen Firefighter Memorial Committee has been hard at work developing fund-raising projects to benefit the memorial. Please support these events!

As of press time, the first two benefit events of 2007 have been scheduled for Saturday evening, July 7th and Saturday afternoon September 1st.

Join us on July 7th when the **Newark Bears** host the Long Island Ducks at Newark's waterfront stadium. Tickets are just \$10 each. A memorial T-shirt with the color logo shown at right is just \$15 and we offer a combination ticket and T-shirt for \$23.

Go to the Memorial page on the museum website to download and print the order form which has details about T-shirt sizes and where to send payment. If you don't have internet access, please call the museum office and we will mail you the order form. NOTE: You must use our order form to benefit the Memorial. T-shirts are only available by using our order form.

Cathy is also arranging a baseball game with the **Camden Riversharks** for later in the Summer. Please check the website for the latest news!

We also invite you to join us on Saturday September 1st for a benefit at the picnic grove in **Monmouth Park Racetrack** during the Labor Day weekend. The ticket price of \$45 per person includes admission to the park, a great picnic grove from which to enjoy the races, plus your food and beer. Be there by 12:30 since the first race starts at 1pm!

We are limited to 100 attendees at the Monmouth Park event so please contact Cathy about this special event soon. Don't miss out on a great afternoon for a great cause. Get the racetrack picnic order form at the website or by calling the office.

Another Memorial project is a specialty NJ license plate to honor Fallen Firefighters. Legislation to authorize the license plate to benefit the Memorial is being sponsored by Senators Ellen Karcher and Diane Allen. These license plates will provide a way for citizens who don't use Firefighter license plates to show their support for our fallen heroes.



**NEWARK STADIUM**  
**SAT, JULY 7TH**



The plate design is not complete but we anticipate it may use the Fallen Firefighter's Memorial logo shown above.

Cathy is working on still other fund-raisers for the Memorial. If you are interested in helping her, please call Cathy at (732) 499-0008. You can also reach her via a link at the website or by email at njfire-memorial@comcast.net.

We also invite you to visit the website for information about the **personalized granite pavers** that will form the plaza that surrounds the Fallen Firefighter's Memorial.

As noted elsewhere in this issue, we have sold over 100 pavers and have produced the first standard and double size pavers. When this program started we planned to

make the pavers out of red concrete but we are very pleased to report that we were able to switch to more durable granite pavers. The first two pavers look great. We will display them at some of the 2007 public events we attend including Wildwood in September and the museum muster in October.

**MONMOUTH PARK**  
**SAT, SEPTEMBER 1ST**



**Please join us to make all of these fund-raising events successful!**

**The New Jersey Fallen Firefighter's Memorial is affiliated with the New Jersey Fire Museum and is sponsored by the New Jersey Fire Engine & Equipment Museum at Allaire, a 501 c 3 non-profit NJ corporation.**

## *Honor Roll of Fire Company and Fire Dept Museum Memberships!*

**Is your Fire Company or Department Listed Below? If not, please join the NJ firefighters that have demonstrated support through membership! The form is on the cover of this newsletter and is also available at the website or by calling the museum business office! In addition, we have individual and family memberships as well but we are not listing them here for privacy reasons.**

### **PLATINUM LEVEL**

Atlantic Engine & Truck Co #2, Long Branch  
 Bayshore Fire Chiefs Association, Keyport  
 Campbell Supply Co., South Plainfield  
 Denville Vol Fire Dept, Denville  
 Fire & Safety Services Ltd., Piscataway  
 Florham Park FD. Assoc Inc, Florham Park  
 Liberty Hose Co #1, Garfield  
 Manasquan Hook & Ladder Co #1, Manasquan  
 Marlboro Fire Co, Marlboro  
 Matawan Fire Dept, Matawan  
 Mid Monmouth Mutual Aid Assoc, Tinton Falls  
 Millstone Township Fire Co, Clarksburg  
 Navesink Hook & Ladder Co #1, Red Bank  
 NJ Assoc of Fire Districts, Monmouth Junction  
 New Jersey Carpenters Pension Fund, Edison  
 New Jersey Fire Equipment Co, Dunellen  
 NJ State Firemen's Assoc, East Orange  
 NJ State Vol Firemen's Assoc, Toms River  
 Oceanic Fire Eng Co #1, Long Branch  
 Rio Grande Vol Fire Co, Rio Grande  
 Township of Washington Vol FD, Washington  
 Wayside Fire Co, Tinton Falls  
 Woodbridge Fire Co #1, Woodbridge

### **GOLD LEVEL**

Dunellen Fire Dept, Dunellen  
 Florence Fire District #1, Roebling  
 Freehold Twp Brd of Fire Comm Dist 2, Freehold  
 Goodwill Fire Co #2, Spring Lake  
 Holmdel Fire Co #1, Holmdel

Keansburg Fire Co #1, Keansburg  
 North Centerville Vol Fire Co, Hazlet  
 Ramtown-Howell Fire Co #2, Howell

### **SILVER LEVEL**

Adelphia Fire Co, Adelphia  
 Air & Gas Technologies  
 All Hands Fire Equipment, Neptune  
 Farmingdale Fire Co #1, Farmingdale  
 Flemington Boro Fire Dept, Flemington  
 Fort Lee Fire Co #1, Fort Lee  
 Green Brook Exempt Firemens Assn, Green Brook  
 Green Brook Fire-EMS, Green Brook  
 Hamilton Fire Co, Neptune  
 Monmouth County Fireman's Assoc, Keansburg  
 Morris County Fire Academy, Morristown  
 New Jersey Vol Fire Chief Assoc, Jackson  
 Ranch Hope, Inc, Alloway  
 Ringwood Vol Fire Co #1, Ringwood  
 Secaucus Engine Co 1, Secaucus  
 Squankum Fire Co #1, Farmingdale  
 Three Bridges Vol Fire Co, Three Bridges  
 Tinton Falls Fire Co #1, Tinton Falls  
 Union County Fire Chiefs Assoc, Berkeley Heights  
 Valtek Inc, Paterson  
 Waterford Twp Fire Dept, Atco  
 Westside Hose Co #1, Red Bank

### **BRONZE LEVEL**

Avon Fire Dept, Avon  
 Bamber Lake Vol Fire Co, Forked River  
 Bay Head Fire Co #1, Bay Head

## *Honor Roll of Fire Company and Fire Dept Museum Memberships!*

<p>Boonton Fire Dept, Boonton</p> <p>Borough of Red Bank, Red Bank</p> <p>Branchport Hose Co, Long Branch</p> <p>Brookview Vol Fire Co, East Brunswick</p> <p>Chatham Borough Fire Dept, Chatham</p> <p>Cliffwood Vol Fire Co #1, Inc, Matawan</p> <p>Commerce Bank, Toms River</p> <p>Deal Fire Co #2, Deal</p> <p>Dorothy Vol Fire Co, Dorothy</p> <p>Eatontown Fire Dept, Eatontown</p> <p>Emerson Vol Fire Dept, Emerson</p> <p>Engine Co Number 2, East Rutherford</p> <p>Essex Fells Vol Fire Co, Essex Fells</p> <p>Fairmount Fire Co #1, Long Valley</p> <p>Franklin Lakes FD, Franklin Lakes</p> <p>Gong Club Inc, Jersey City</p> <p>Goodwill Hose Co, Belmar</p> <p>Hazlet Fire Co #1, Hazlet</p> <p>Independent Fire Co #1, Spring Lake</p> <p>Iselin Vol Fire Co #1, Iselin</p> <p>Lincoln Fire Co, Totowa</p>	<p>Linden Firemen's Mutual Benevolent Assn Linden</p> <p>Lanoka Harbor Vol FC, Lanoka Harbor</p> <p>Laurence Harbor Fire Co, Laurence Harbor</p> <p>Little Silver Vol Fire Co, Little Silver</p> <p>Mantoloking Fire Co #1, Mantoloking</p> <p>Maple Shade Fire Dept, Maple Shade</p> <p>Maplewood FD Exempt Assoc, Maplewood</p> <p>Monmouth County Fire Police Assoc, Freehold</p> <p>Montville Fire Dept, Montville</p> <p>New Jersey Carpenters Fund, Long Branch</p> <p>New Milford Fire Co # 1, New Milford</p> <p>Norwood Fire Co #1, Norwood</p> <p>Phillipsburg Exempt Firemen Assoc, Phillipsburg</p> <p>Pottersville Vol Fire Co, Pottersville</p> <p>Relief Engine Co, Moorestown</p> <p>Richardson Engine Co #2, Freehold</p> <p>South Plainfield Vol Fire Co, South Plainfield</p> <p>St. Lukes Men's Fellowship, Long Branch</p> <p>Town of Boonton Fire Dept, Boonton</p> <p>Woodlynne Fire Co #1, Woodlynne</p>
---	--

### **CONGRATULATIONS TO THE NEWEST OWNERS OF MEMORIAL PAVERS!**

The first two granite pavers have been produced! As reported in our last issue we are making the pavers out of granite not clay or concrete bricks. Shown center below is a standard paver measuring 6 X 12 inches with up to three lines of text. On the right is a double paver measuring 12 X 12 inches with up to

six lines of text. Order forms are available at the website or from the museum office. NOTE: Please use the new order forms dated "effective 1 May 2007". Pavers are a truly lasting way to contribute to the memorial.

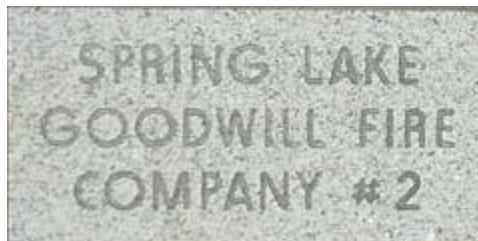
#### **Newest Paver Owners!**

Barbara Pierce of Franklin

Betty Crane of Ogdensburg

Camden County Fire Chiefs & Fire Officers Association, Pennsauken

Secaucus Fire Department



**Photos— David C Horsnall Jr.**

*With Great Appreciation to Our \$1,500 NJ Fire Equipment Vendors*



**We Build Confidence.™**

<http://www.piercemfg.com>

## Fire Apparatus Sales & Service



**Fire & Safety Services, Ltd.**

560 Stelton Road

Piscataway, New Jersey 08854

(732) 752-2400 Fax (732) 752-9385



*With Great Appreciation to Our \$1,500 NJ Fire Equipment Vendors*



**CAMPBELL**  
**Supply Co. Inc.**

**N.B. (Scott) Campbell**  
**President**

180 Talmadge Road  
P.O. Box 266  
Edison, NJ 08818-0266  
Phone: (732) 287-8884  
Fax: (732) 287-2545  
Home: (732) 683-1449

[scampbell@campbellsupply.com](mailto:scampbell@campbellsupply.com)  
[www.campbellsupply.com](http://www.campbellsupply.com)



## ***From the Files of Ernie Day***

This new column will bring you a variety of items from the collection of the late Ernie Day who first proposed a state fire museum over 30 years ago. These columns will include but not be limited to correspondence, sales literature, comics, jokes, and photographs. Ernie was quite a character and never at a loss for words. We may not be

able share all of the colorful things he had to say over the years, but we will share a variety of items from a man who apparently never threw anything away.

For our first column, we present the sales record and a photo of the Pirsch aerial delivered to Roselle, NJ in 1942. (continued next page)

<b>Record of Fire Engine Sale and Delivery</b>		
<b>NEW JERSEY FIRE EQUIPMENT CO.</b>		
<b>Office Record</b>		
Name of Fire Dept.	Roselle	City Roselle, N.J.
Order No.	8207	No. Unit Sold 2
Type of Apparatus	Intermediate Aerial Truck	Size 65-ft. aluminum
Priority Rating	A-10	Case No. 190788 Date issued 12/22/41
Date of Sale	9/25/41	Date of Invoice 12/3/42 Factory Order Entered 10/15/41
Contract Price	\$12,890.00	
Financed by	-----	Delivery Date December, 1942
Driver from Factory	Freight to Plainfield N.J.	Delivery Engineer to Customer W. Pretzman
Trade in	-----	Sold to -----
<b>Chassis Information</b>		
Make of Chassis	Pirsch	Model 15 Make of Engine Hercules
Truck Serial No.	1261	Engine No. 137342 Model RCLD
Horsepower	152	Bore 4-3/4" Stroke 5-1/4"
Chassis Supplier	Pirsch	Wheelbase 265" Size of Tires 8.25 x 20
Type of Cab	Semi-cab	No. Cyl. 6
<b>Equipment Information</b>		
Fire Apparatus Manufacturer	Peter Pirsch & Sons	Serial No. 1261
Type Pump	-----	Pump No. ----- Model -----
Size of Booster	-----	Encl. Equip. and Compartment Life Net & Skirting
Underwriter's Test Conducted at	-----	Date of Test -----
2 1/2" Thread	N.S.T.	Lettering Hood: R.F.D. Side: ROSELLE FIRE DEPT. Door: TRUCK CO. NO. 1
1 1/2" Thread	N.S.T.	
Suction Thread		Suction Size
<i>Gear Ratio 7 1/2 to 1</i>		



**Roselle fire officials pose for a photo in December 1942 with their 65' aerial ladder truck. Since chrome plating was restricted to support the war, headlights, handrails and even hubcaps were plain metal, although it appears that Roselle managed to get a nickel or chromed bell! The lack of chrome trim gave rise to the name "plain Jane" for trucks delivered in this era. Photo—Ernie Day collection**

The order was placed less than two months prior to the attack on Pearl Harbor and the original contract called for the apparatus to be delivered within about "One Hundred Fifty Working Days".

As it turned out, the rig was delivered some fourteen months after the order date, due to the wartime delay in acquiring the necessary aluminum. Many apparatus were built with little or no chrome during the war years.

Peter Pirsch & Sons was a well-known fire apparatus maker located in Kenosha WI and the Roselle apparatus was built on their most famous and popular chassis. The order form says this was a Model 15 chassis but to most apparatus buffs it was simply known as the custom chassis. Its smooth lines made it a true classic. With the addition of boxy fenders and quad headlights, this chassis remained in production into the 1970s! The aluminum alloy ladder design was also unique and made it easy to identify a Pirsch aerial in a parade or at a fire.

Alas, Peter Pirsch & Sons ceased operations in 1988. Some rigs are probably still in service and others can be seen attending musters all over America. The final status of the Roselle rig is unknown.

Later this year, the first-ever scale model of this classic Pirsch fire engine will be offered by Corgi Toys.

**AIR & GAS**  
TECHNOLOGIES, INC.

**BRIAN KEELAN**  
Vice President

42 Industrial Drive • Cliffwood Beach, NJ 07735  
Phone: (732) 566-7227 • Fax (732) 566-0535  
E-Mail: bkeelen@airgastech.com

*The Best Tools for the Toughest Job!*

**www.allhandsfire.com**

**PO Box 1245 Wall NJ 07719 Tel (732) 502-8060**

**New Jersey Fire Events for 2007!**

*NOTICE: Please submit fire service event information to the museum via the website or by mail to the office so we can post it to the Calendar of events at no cost.*

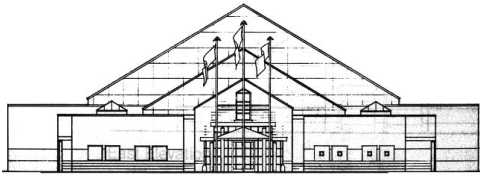
*We reserve the right to edit content but we want to include your event so submit the information as soon as you can!*

**Lee's Emergency  
Equipment**

**(609) 296-10253  
26 E Main S, Tuckerton, NJ 08087**

**EDUCATING OUR CHILDREN, PRESERVING FIRE SERVICE  
HERITAGE, HONORING OUR FALLEN HEROES**

Presort Standard  
US Postage  
**PAID**  
Asbury Park, NJ  
07712  
Permit 85



**New Jersey Fire Museum & Fallen Firefighter's Memorial**  
175 Washington Street  
Long Branch NJ 07740



**A vintage American LaFrance "Jersey Girl" from Port Monmouth now living in Illinois! Can we bring her home someday?**

Winter/Spring 2007

## Museum Membership Application Form

<b>Regular (Please circle dollar value)</b>					
	Bronze	Silver	Gold	Platinum	Other
Individual	\$20	\$40	60	\$75	\$____
Family	\$25	\$50	\$75	\$100	\$____
<b>Corporate/Fire Co/Dept (Please circle dollar value)</b>					
	Bronze	Silver	Gold	Platinum	Other
	\$75	\$150	\$300	\$500	\$____

Name \_\_\_\_\_

Address \_\_\_\_\_  
\_\_\_\_\_

City \_\_\_\_\_ State \_\_\_\_ Zip \_\_\_\_\_

Email Address: \_\_\_\_\_

*(please be sure it is readable! Thanks!)*

Tel Number (optional) (\_\_\_\_) \_\_\_\_\_

**Please mail form and your check made payable to:**  
**NJFEEM**  
**175 Washington Street**  
**Long Branch NJ 07740**

NOTE: We would appreciate having your email address so we can send the newsletter to you electronically. We transmit the newsletter as a PDF format file (up to 3MB).